



Cisco Access through HyperTerminal Guide

This document is intended to tell you everything you need to know about configuring your Cisco 675/678 DSL router for use with Cloudnet's DSL service. The entire process should take less than 20 minutes. You will need the following materials:

- Your Cisco 675/678 External DSL Router
- The "Management" Cable
- An Open Serial (9 pin) Port on Your PC
- Installed "HyperTerminal" Software
- Your Cloudnet Username and Password



Cisco 675/678



Management Cable



Crossover Cable

1. Connect the Management Cable from your computer to the Cisco 675/678.

- A) Identify the "management" cable. This is usually a light-blue or gray cable with one RJ45 (ethernet) and one 9 pin serial end. This cable is included with the Cisco 675/678 box you received from Qwest.
- B) Connect the 9 pin serial connector to an open port on the back of your computer. Plug the other end into the MGMT port on the back of your Cisco 675/678.

2. Start the "HyperTerminal" program.

- A) Go to the "Start" menu, click on "Programs" then "Accessories" and "Communications" and finally "HyperTerminal." Double click on the "Hypertrm" icon as shown to the right.
- B) HyperTerminal asks you to enter a name for your connection. Type "DSL" and click on the "OK" button.
- C) Click "Cancel" when you are prompted to enter a telephone number for your connection.



3. Configure HyperTerminal to connect to the Cisco 675/678.

- A) Click on the "File" menu and choose "Properties" from the list.
- B) Set the "Connect Using" field to "Direct to Com 1" (or whichever com port you are using.)
- C) Click on the "Configure" button and use the following settings:

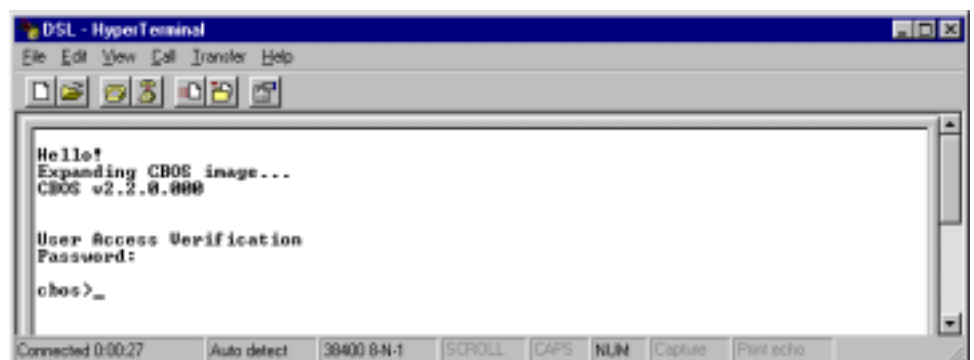
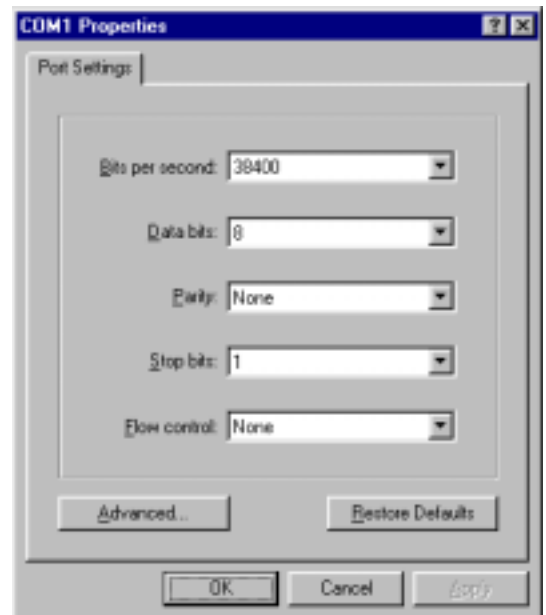
Bits per second:	38400
Data bits:	8
Parity:	None
Stop bits:	1
Flow control:	None

Click on "OK" and then "OK" again to get out to the main HyperTerminal window when you are done.

Once you get everything set, you should be able to push enter once or twice to get the CBOS Password prompt. The router comes without passwords set, so you can just push enter to get past the "Password:" prompts for now.

If you do **NOT** get a password prompt, refer to the **troubleshooting** section on the back of this sheet.

Once you get to this point you can start with the first line of the Cisco 675/678 Configuration sheet.



Troubleshooting

If you find yourself pushing enter, but nothing happens, please try the following procedures.

Things to check:

- 1) Is everything plugged in firmly?
- 2) Is everything plugged into the correct socket?
- 3) Does your Cisco 675/678 have power?
- 4) Do you have serial ports enabled in your BIOS?

Things to do:

- 1) While HyperTerminal is open, remove power from the Cisco 675/678 and plug it back in.
- 2) Try using direct to com 2.
- 3) Try using a different serial port.

Still having problems? Call Cloudnet at 240-8243



Corporate Center Building
26 6th Avenue North,
Suite 110
Saint Cloud, MN 56303

(320) 240-8243

www.cloudnet.com info@cloudnet.com
02.08.02 BDR